

RAGIN' CAJUNS ATHLETIC FOUNDATION

# MEMBERSHIP GUIDE

2023 - 2024



## RAGIN' CAJUNS





BRYAN MAGGARD, Ph.D.  
*Vice President for  
Intercollegiate Athletics*

---

# CAJUN NATION,

Thank you for your support of Louisiana Athletics and our student-athletes! Your generosity plays an important role in enhancing the lives of Ragin' Cajun student-athletes and helps build the future of Louisiana Athletics.

It is our goal to become the preeminent athletics department in the Sun Belt Conference and continually put ourselves in the national spotlight through championship athletics. This cannot be achieved without the continued loyal support of our Ragin' Cajuns Athletic Foundation members.

In the last two years, our programs have won 12 championships that include the most community service hours in the Sun Belt Conference, SBC regular season and tournament titles, a bowl championship, and a NCAA Regional title. I am extremely proud of our student-athletes and coaches, and I know that the future is bright across the board for all of our sports.

Academically, we saw tremendous success as well with 11 teams earning a team GPA of 3.0-or-higher in the fall and 10 in the spring. Six of our teams have had at least 10 straight semesters with a 3.0 team GPA, led by women's tennis (28) and men's tennis (26).

It is vital we continue to grow the membership base for the RCAF to continue to win championships and compete on the national stage. Your gift to the Ragin' Cajuns' Athletic Foundation is a key cornerstone in providing the financial resources necessary to continue to build championship programs at Louisiana.

After making your investment with the RCAF, encourage a fellow Cajun to do the same! There is strength in numbers, and every gift makes a difference. Thank you for choosing to make an impact on the lives of Ragin' Cajuns student-athletes this year. I look forward to seeing you soon as we begin another exciting year of competition.

**GEAUX CAJUNS!**

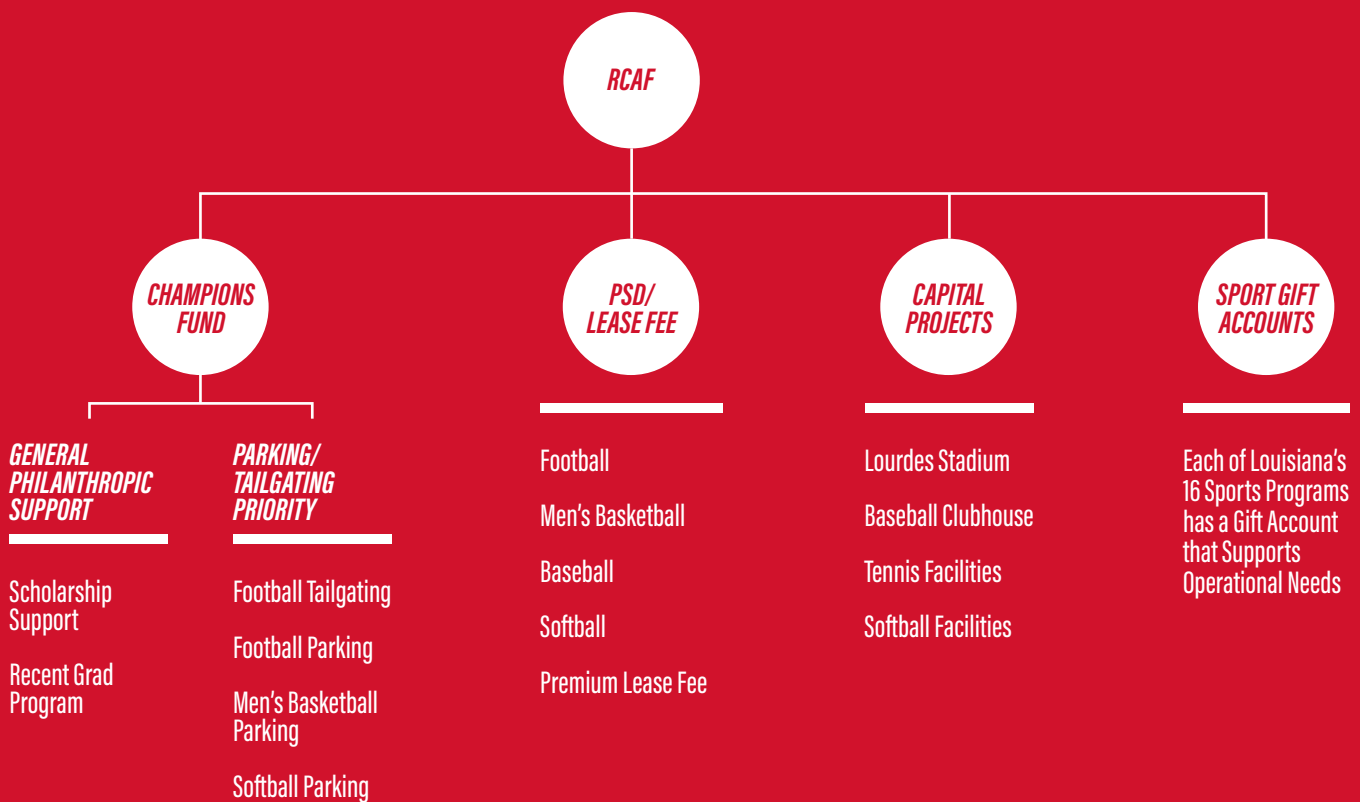
A handwritten signature in white ink that reads "Bryan Maggard".



# WHAT IS THE RCAF

The Ragin' Cajuns Athletic Foundation is the official fundraising arm for Louisiana Athletics. The RCAF's mission is to build authentic relationships that provide resources to enhance the experience of Louisiana student-athletes. RCAF members assist in generating revenues for three main purposes:

- Offset annual student-athlete scholarship costs.
- Provide financial resources for capital projects such as new state-of-the-art athletic facilities or renovations that enhance existing athletic facilities.
- Enhance sport specific operating budgets.



2022-2023

# YEAR IN REVIEW

School Record 5th Consecutive Bowl Game

First Volleyball Post-Season Appearance in School History

Men's Basketball SBC Tournament Championship and NCAA Tournament Appearance

Golf SBC Tournament Championship and NCAA Regional Appearance

Softball SBC Regular Season and Tournament Championships, NCAA Regional Champions, and NCAA Super Regional Appearance

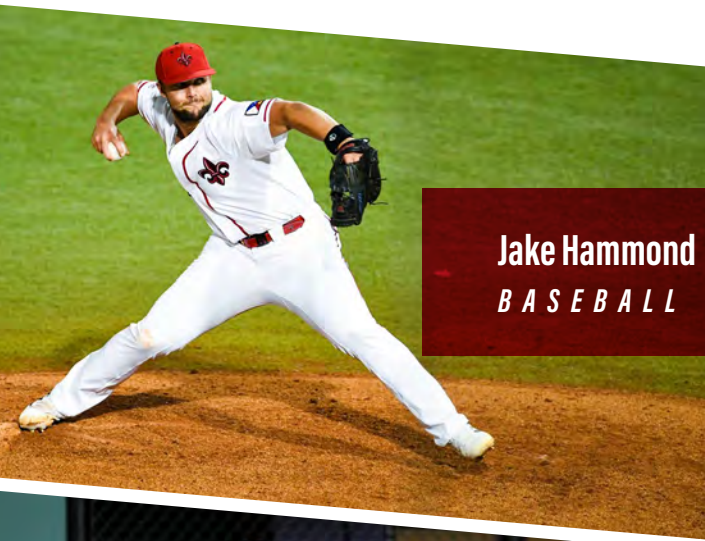
Baseball NCAA Regional Appearance

Outdoor Track & Field Sent 5 Student-Athletes to the NCAA Championship

Most Community Service Hours in the Sun Belt Conference



# IMPACT



**Jake Hammond**  
B A S E B A L L

*The donations made to the RCAF have led to a college sports experience at UL like no other. My teammates and I are fortunate beyond measure for the school pride and charitable hearts of our alumni and supporters. Thank you for your continued generosity and allowing my teammates and I the privilege of playing at the best facilities in the country.*

---



**Jourdyn Campbell**  
S O F T B A L L

*I am so thankful for the opportunity that the University of Louisiana has provided me. Receiving an athletic scholarship has impacted not only me, but also my family. It allows me to receive an education that will allow me to set myself up for life, while also lowering the financial burden of it all.*

---



**Karlee Bedre**  
S O C C E R

*The donations that we receive help the soccer team to be successful not only in the classroom and on the field, but we see improvement around the facility and our lives as well. That makes Ragin' Cajun soccer feel not just like a sport but a family that connects us to our community and a life that will take us to higher places.*

---



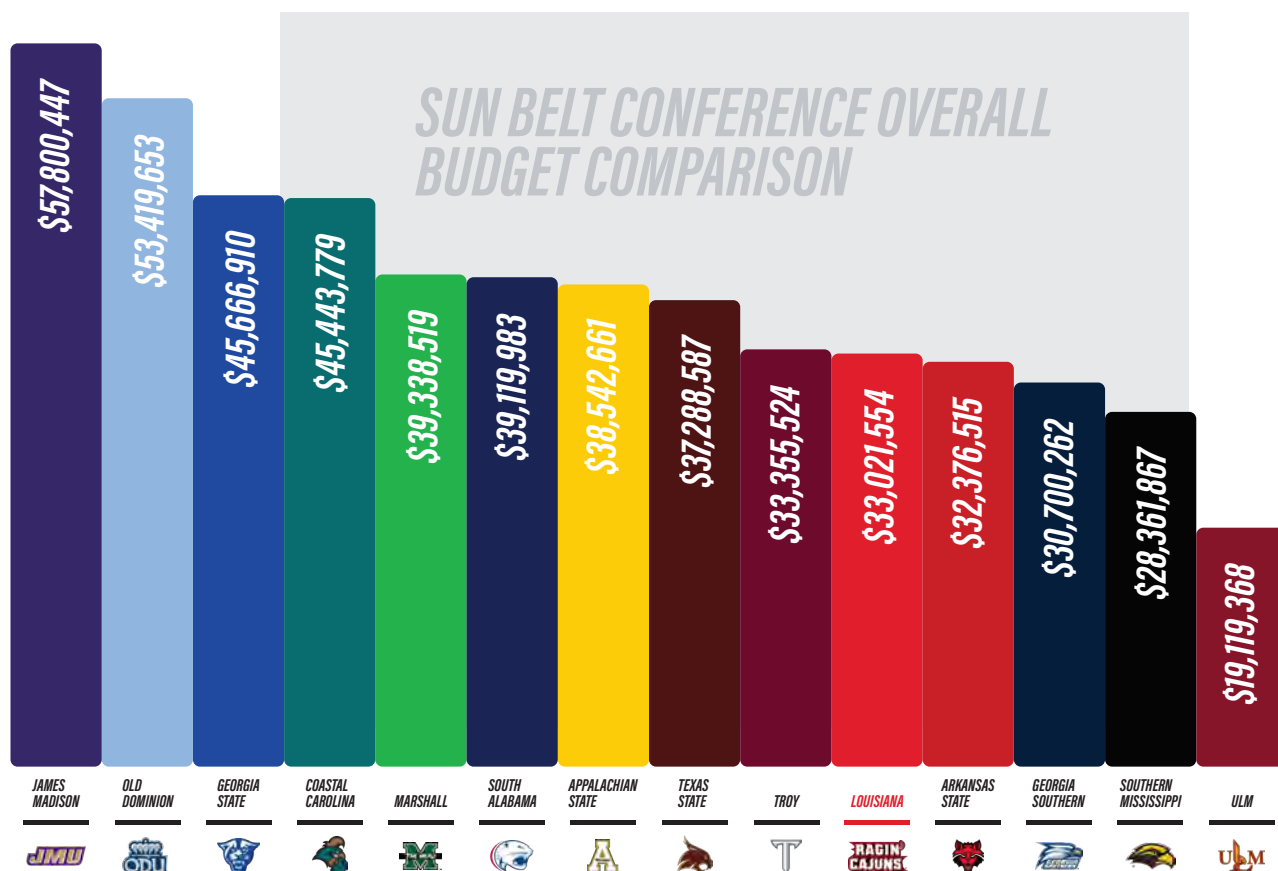
# ANNUAL FUND CHAMPIONS FUND

Louisiana Athletics is proud to announce the rebranding of the Annual Fund. What will now be referred to as the RCAF CHAMPIONS FUND, is an investment of outstanding support in the most important areas for Ragin' Cajuns student-athletes:

**SCHOLARSHIPS / NUTRITION / ATHLETIC MEDICINE  
STRENGTH AND CONDITIONING / RECRUITING /  
COMPETITIVE EXCELLENCE**

Creating champions both on and off the field is a top priority for Louisiana Athletics. The 400+ Ragin' Cajun student-athletes receive the best experience because of the support provided by the RCAF Champions Fund.

Currently, UL Athletics budget ranks 10th of 14 schools in the Sun Belt Conference, and the cost of creating a championship experience for Ragin' Cajuns student-athletes continues to rise. In order to continue to win championships, it is critical to engage with Louisiana alumni and friends to grow the base of support for the RCAF Champions Fund.



**Calin Postea**

**MENS' TENNIS**  
SOPHOMORE

**Siena DeCambra**

**VOLLEYBALL**  
SOPHOMORE



**TUITION & FEES**

**\$10,382**  
(IN-STATE)

**\$24,110**  
(OUT-OF-STATE)

**ROOM & BOARD**

**\$10,990**

**COST OF  
ATTENDANCE**

**\$5,180**

**BOOKS**

**\$800**

**NUTRITION PROGRAM**

**\$2,500**

**ATHLETIC  
PERFORMANCE**

**\$5,307**

**SPORTS MEDICINE**

**\$3,173**

**ACADEMIC SUPPORT**

**\$1,800**

**\$40,132**

**AVERAGE ANNUAL COST  
PER IN-STATE SCHOLARSHIP  
STUDENT-ATHLETE**

**OUT-OF-STATE — \$53,860**



# ***IMPORTANT DATES***

**JUL  
1**

**2023-24 GIVING  
YEAR BEGINS**

---

**AUG  
30**

**BASKETBALL PRIORITY  
SEAT DEADLINE**

---

**OCT  
30**

**BASEBALL AND SOFTBALL  
PRIORITY SEAT DEADLINE**

---

**MAR  
30**

**2024 FOOTBALL PRIORITY  
SEAT DEADLINE**

---

**JUN  
30**

**2023-24 GIVING  
YEAR CONCLUDES**



# ***RCAF PRIORITY POINTS & INVESTOR RANKING***

## **HOW POINTS ARE CALCULATED**

**Priority points are calculated based on  
four criteria**

### **1 POINT**

For every \$100 given across  
Louisiana Athletics

### **1 POINT**

For every \$300 given across the  
entire University

### **1 POINT**

For each season ticket purchased

### **10 POINTS**

For each year as an investor to the  
Champions Fund

## **HOW INVESTOR RANKING IS CALCULATED**

Your Investor Rank is determined by your total  
yearly RCAF contributions, which establishes your  
Investor Level. Priority points are then used to  
rank you within your Investor Level.

## **TOTAL INVESTMENT MODEL**

The RCAF rankings and benefits are based  
on a Total Investment Model. All gifts made to  
Louisiana Athletics, in the current giving year,  
are combined to create a Total Investment Level,  
which determines Investor Rankings and benefits.

Total Investment benefits and Investor Ranking  
are activated with a gift of \$50 or more to the  
RCAF Champions Fund.



***RCAF  
BENEFITS***

[illegible]



NEW  
THIS  
YEAR!

# LAGNIAPPE CLUB

RCAF Members who give \$15,000 or more to the Champions Fund are considered Lagniappe Club members. Lagniappe Club membership benefits vary based on your contribution.

	\$15,000	\$25,000	\$30,000
Club Access for Football	2 Club Passes / 1 Parking Pass	4 Club Passes / 2 Parking Passes	6 Club Passes / 3 Parking Passes
Club Access for Men's Basketball	2 Club Passes / 1 Parking Pass	4 Club Passes / 2 Parking Passes	6 Club Passes / 3 Parking Passes
Club Access for Baseball	2 Club Passes / 1 Parking Pass	4 Club Passes / 2 Parking Passes	6 Club Passes / 3 Parking Passes
Club Access for Softball	2 Club Passes / 1 Parking Pass	4 Club Passes / 2 Parking Passes	6 Club Passes / 3 Parking Passes
In-Game Recognition			
Exclusive Louisiana Athletics Experience			

## FOOTBALL

Reserved Parking Space  
Complimentary In-Game Food and Beverage

## BASEBALL

Reserved Parking Space  
Access to Stadium Club  
Complimentary In-Game Food and Beverage

## MEN'S BASKETBALL

Reserved Parking Space  
Access to Courtside Club  
Complimentary In-Game Food and Beverage

## SOFTBALL

Reserved Parking Space  
Access to Stadium Club  
Complimentary In-Game Food and Beverage

## OTHER BENEFITS

In-Game Benefits (One Per Pass)  
Lagniappe Club Logo Item

# PREMIUM EXPERIENCES

BASEBALL



## SUITES

Located on the press box level between first and third base, each suite offers 12 outdoor seats and 4 indoor seats, plus 2 standing room only tickets.

- ✦ Outdoor Seating
- ✦ Indoor Lounge
- ✦ Catering Service (additional charge)
- ✦ 4 Parking Passes

## LOGE BOX

**UL Athletics Investment: \$1,480 for 8 season tickets + \$7,500 Premium Seat Fee**

Located on the second level down the first base line and third base line.

- ✦ Outdoor Seating
- ✦ Access to Stadium Club
- ✦ Cash Bar
- ✦ 2 Parking Passes



## PATIO BOX

**UL Athletics Investment: \$1,100 for 6 season tickets + \$3,500 Premium Seat Fee**

Located on the field level down the first base line and third base line.

- ✦ Outdoor Seating
- ✦ Access to Stadium Club
- ✦ Cash Bar
- ✦ 2 Parking Passes

## HOME PLATE BOX

**UL Athletics Investment: \$1,100 for 6 season tickets+ \$3,500 Premium Seat Fee**

Located on the concourse level behind home plate.

- ✦ Outdoor Seating
- ✦ Access to Stadium Club
- ✦ Cash Bar
- ✦ 2 Parking Passes





## COURTSIDE PRICING

- ✿ \$200 – Ticket Cost
- ✿ \$1,800 – Champions Fund
- \* Courtside Seating includes access to the Courtside Club

## COURTSIDE CLUB

- ✿ Opens 1 Hour Before Tipoff
- ✿ All-Inclusive Food and Non-Alcoholic Beverage
- ✿ Snacks and Popcorn
- ✿ Premium Cash Bar



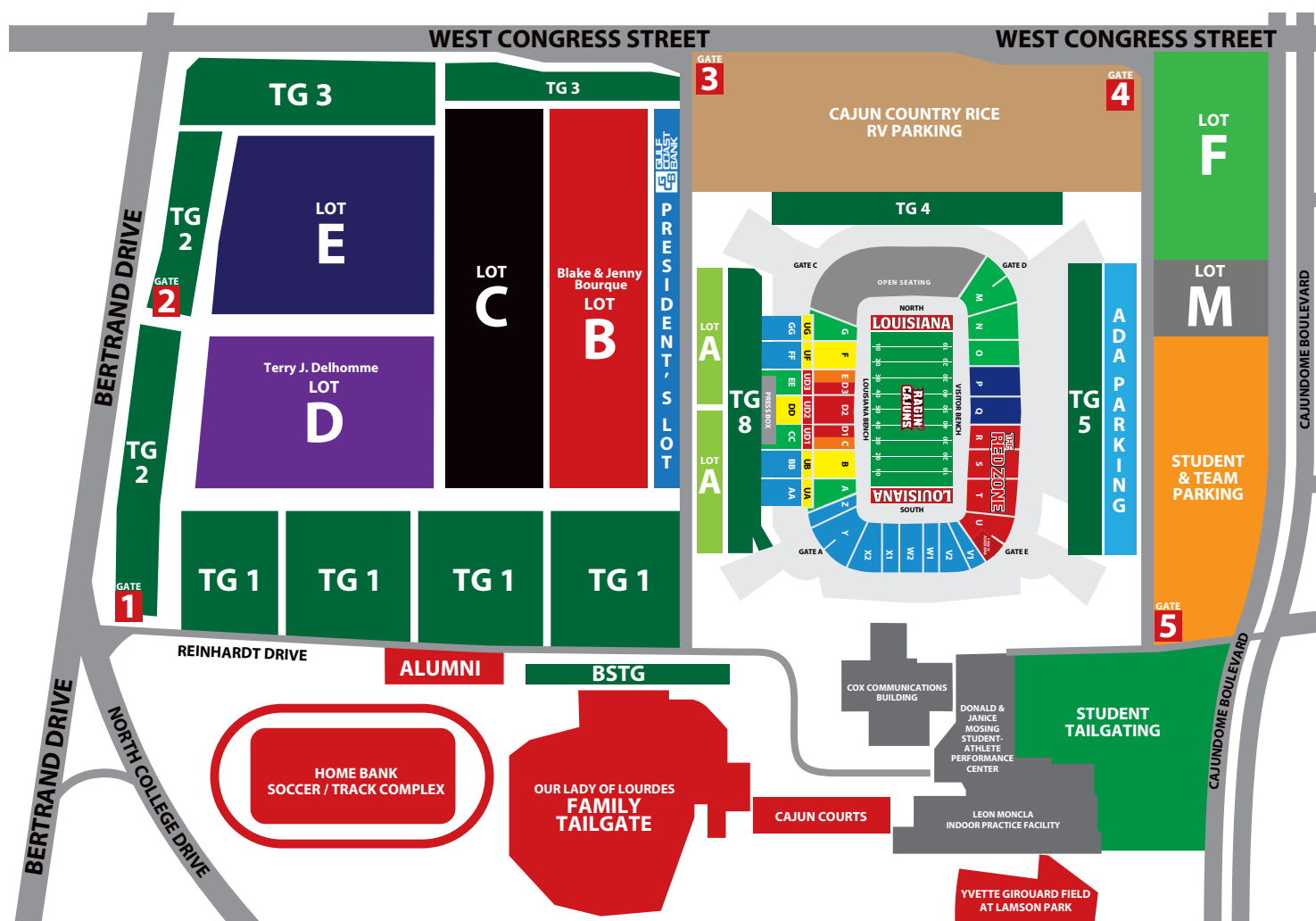
## BASEBALL

Stadium club located on the upper level concourse behind home plate. Members receive complimentary popcorn and 7th inning snacks, while also having access to an exclusive cash bar and buffet.

## SOFTBALL

An indoor club located on the 2nd level concourse behind home plate. Access to this club is only available to Lagniappe Club members. Members receive complimentary in-game food and beverage.

# 2023 LOUISIANA FOOTBALL











## SEATING

	Ticket	PSD	Total Cost
Chairback Seating	\$150	\$145	\$295
Priority 2	\$150	\$85	\$235
Priority 3	\$150	\$25	\$175
A, G, CC, EE	\$125	\$25	\$150
South End Zone	\$110	\$25	\$135
M, N, O	\$150	—	\$150
GA	\$110	—	\$110

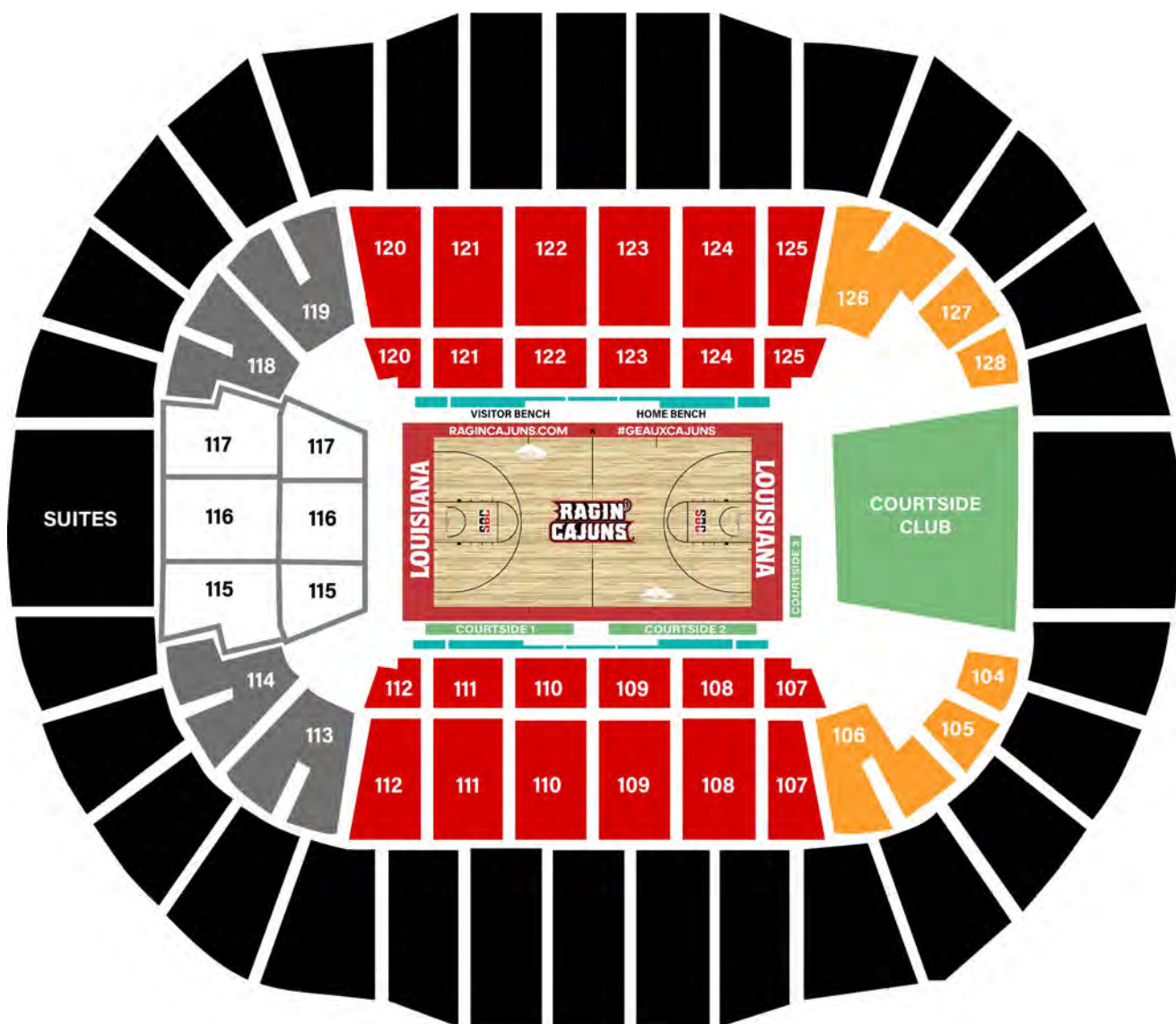


 Lot A	\$60	\$12,500
 Lot B	\$60	\$3,000
 Lot C	\$60	\$500
 Lot D	\$60	\$300
 Lot E	\$60	\$250
 Lot F	\$60	\$100

TAILGATING	Champions Fund	
	Pass	Per Space
TG1	\$500	\$500
TG2	\$450	\$500
TG3	\$450	\$500
TG4	\$425	\$500
TG5	\$425	\$500
RV	\$1,100	\$1,200

*SEATING & PARKING*

# *2023-24 LOUISIANA MEN'S BASKETBALL*





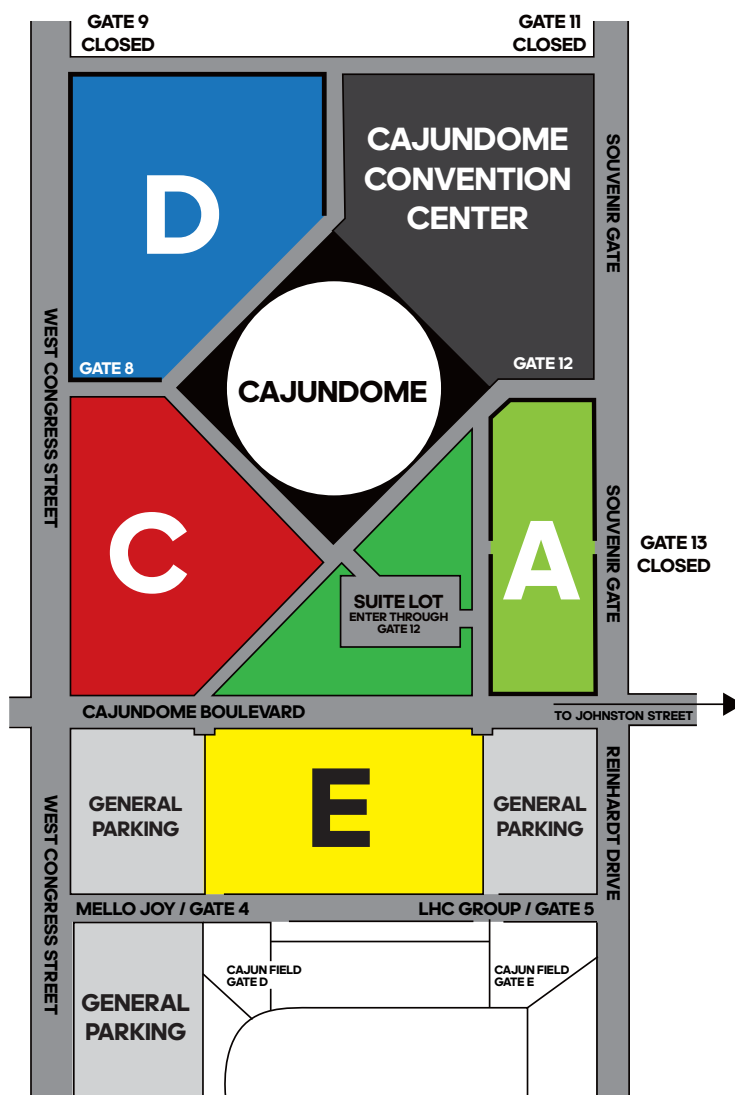


## SEATING

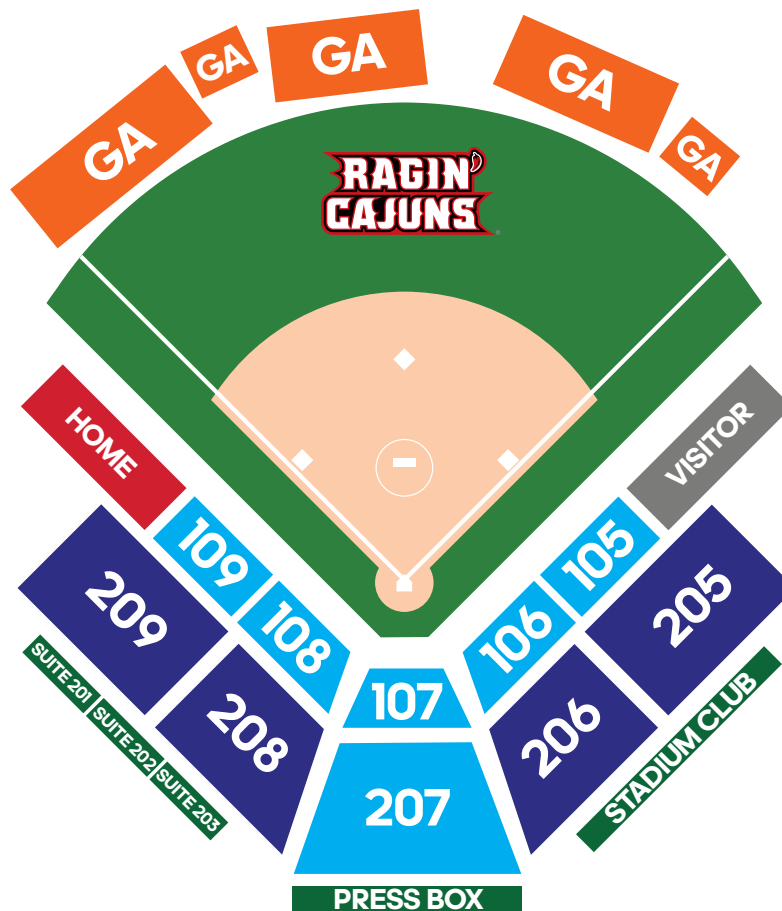
	Ticket	PSD	Total Cost	Champions Fund Minimum
◀	\$200	\$185	\$385	\$500
	\$200	\$60	\$260	\$250
	\$100	\$60	\$160	\$100
	\$100	—	\$100	—



## PARKING

	Pass	Champions Fund Minimum
Lot A	\$60	\$5,000
Lot C	\$60	\$1,000
Lot D	\$60	\$250
Lot E	\$60	\$100



# SEATING 2024 LOUISIANA SOFTBALL






Seat Location	Ticket	PSD	Total Cost	Champions Fund Minimum
 Grandstand Chairbacks	\$145	\$165	\$310	\$50
 Grandstand Bleacherbacks	\$145	\$115	\$260	\$50
 General Admission Outfield	\$100	—	\$100	—





# SEATING 2024 LOUISIANA BASEBALL



Ticket	PSD	Total Cost	Champions Fund Minimum
 \$185	\$275	\$460	\$250 <small>PER SEAT</small>
 \$185	\$175	\$360	\$100
 \$185	\$25	\$210	\$100

# ***CAPITAL PROJECTS***



## **BASEBALL CLUB HOUSE**

M.L. "Tigue" Moore Field at Russo Park is one of the premier baseball facilities in the country, serving as the home of the Louisiana Ragin' Cajuns since 1978. Recently renovated, the park now provides an extraordinary gameday experience for Cajun fans. UL Athletics' commitment to excellence extends beyond the spectators, and it is important to provide a first-class environment for Louisiana baseball players and coaches. These enhanced facilities, including cutting-edge indoor hitting and pitching bays, player locker rooms and lounges, and coaches' offices, will give Cajuns Baseball a competitive advantage in recruiting and retention of the top talent in the state and beyond.



## SOFTBALL IMPROVEMENTS

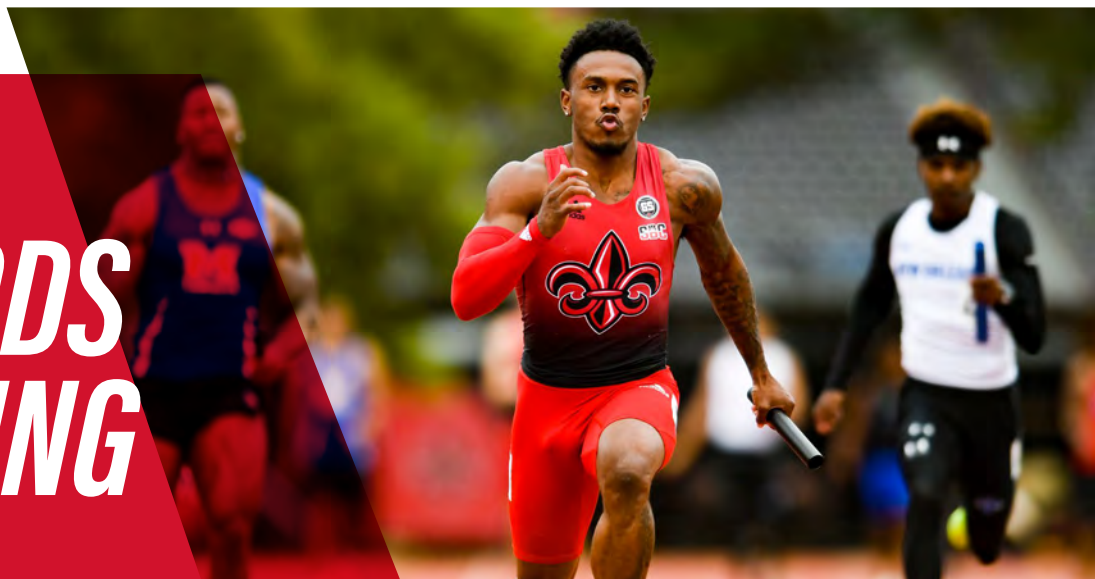
Lamson Park stands as a testament to the unwavering dedication to excellence UL Athletics has made to softball. Since 1985, it has been the proud home of the Cajuns Softball program, continuously evolving to reach its current state of excellence. Renowned for its rich history and captivating beauty, Lamson Park has hosted prestigious tournaments and undergone renovations that prioritize the fan experience. The forthcoming upgrades will provide the UL Softball team with enhanced player amenities, including a state-of-the-art locker room and an inviting lounge for team bonding. Lamson Park remains a symbol of the commitment to creating a top-tier facility that inspires pride and fosters competitive achievement.



## TENNIS RENOVATION

Cajun Courts, the home of Louisiana's Ragin' Cajuns men's and women's tennis programs, enters its 38th season as the venue for both programs. Looking to the future, the forthcoming upgrades to the tennis facility will further enhance the experience for UL Tennis student-athletes and fans. The enhancements will include new grandstands, creating an enhanced viewing experience, along with new courts and renovations to the Culotta Tennis Center, ensuring that Cajuns student-athletes and coaches have access to the finest facilities as they strive to create a championship experience.

# ***METHODS OF GIVING***



## **PAYMENT PLANS**

RCAF Members can meet their desired investor level by setting up a payment plan. These payment plans can be set up by calling the RCAF office or online through Account Manager.

## **MAIL**

Gifts can be made to the RCAF by mailing in your renewal form along with your payment information, either check or credit card. If paying by check, make payable to "RCAF".

### **MAILING ADDRESS**

Ragin' Cajuns Athletic Foundation  
PO Box 43603  
Lafayette, LA 70504

## **MATCHING GIFTS**

Some employers match charitable contributions made by their employees. Please check with your employer and submit your matching claim with your gift.

## **PAYROLL DEDUCTION**

University of Louisiana employees are eligible to give to the RCAF through a payroll deduction payment plan. Payroll deductions can be setup through employees' ULink accounts.

## **GIFTS OF SECURITIES**

Stocks, bonds, mutual funds, etc. are accepted and appreciated by the RCAF. These gifts typically involve publicly traded shares, such as those traded on the major exchanges and over the counter, as well as most mutual funds. Gifts of privately held stock, through more complex, are also possible.

## **PLANNED OR ESTATE GIFTS**

Gifts in the form of life income gifts (Charitable Remainder Trust, Charitable Gift Annuity), charitable lead trusts, and/or bequests are common ways to state your intentions of leaving a future gift to Louisiana Athletics while receiving substantial income, estate, and gift tax benefits now.

## **OTHER WAYS TO GIVE**

Gifts in the form of IRA Distributions, donor advised funds, or private foundation support are great ways to support Louisiana Athletics.

## **ONLINE**

Scan QR Code to Give Now





# RCAF TEAM



**TREY FRAZIER**

*Deputy Director of Athletics/  
RCAF Executive Director*



**BRANDON DOMINGUE**

*Senior Director of Annual Giving*



**DAVID SCHEXNAYDER**

*Director, Athletics Development*



**GERALD HEBERT**

*Director, Athletics Development*



**PENNY CUMBO**

*Assistant Director of Donor Relations*



**OLIVIA VANDERHOEVEN**

*Donor Engagement Coordinator*

## OFFICE ADDRESS

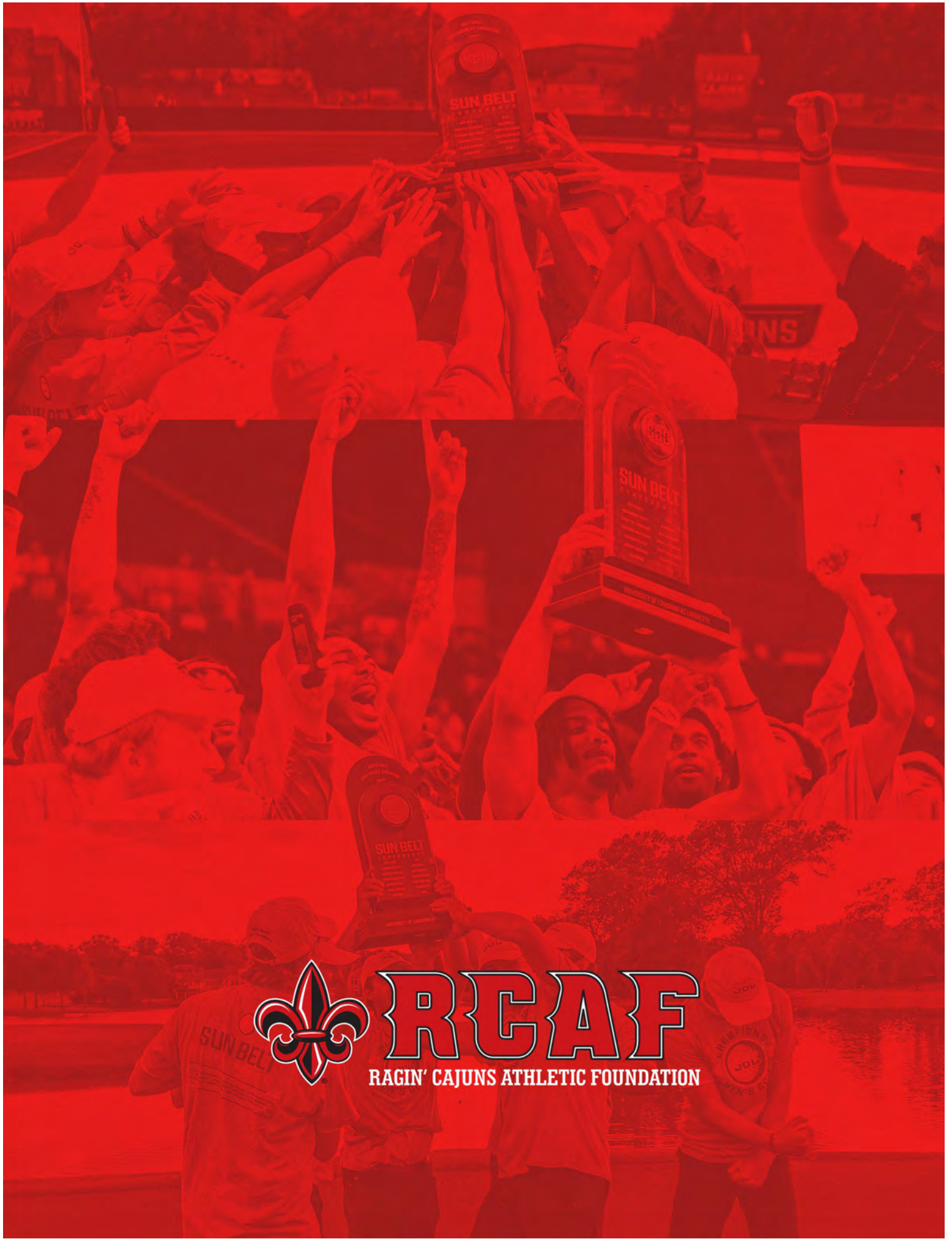
201 Reinhardt Drive  
Lafayette, LA 70504

## MAILING ADDRESS

PO Box 43603  
Lafayette, LA 70504

## CONTACT

337-851-RCAF (7223)  
RCAF@louisiana.edu



# RCAF

RAGIN' CAJUNS ATHLETIC FOUNDATION